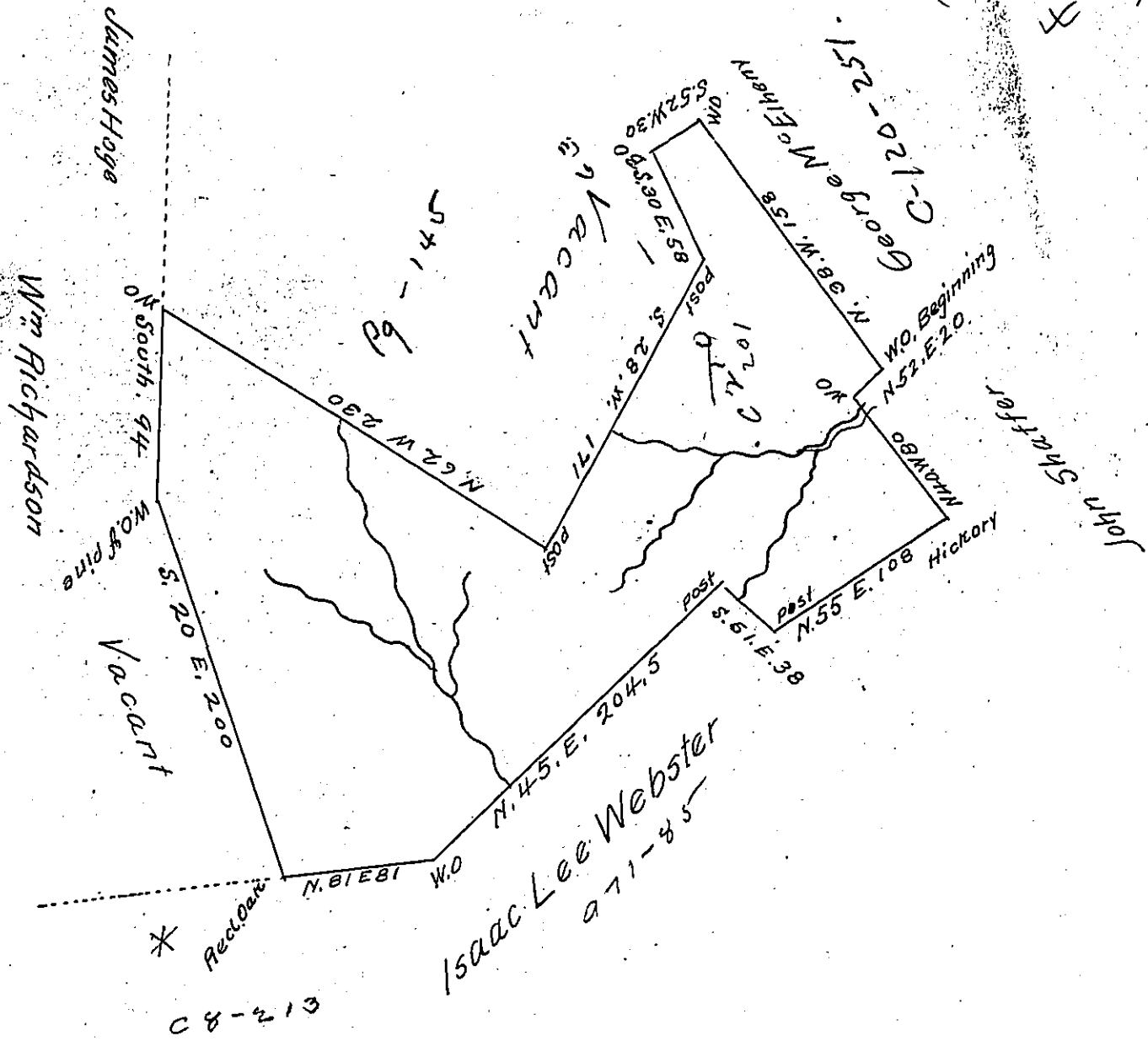


Beaver (Indepce) 56
X H9-73



The above is a draft of a tract of Land surveyed Dec^r 28th 1810 in pursuance of a Warrant granted to Daniel Morgan dated the 13th day of August 1810, situate in Second Moon Township Beaver County adjoining lands of George McElhenny James Hoge William Richardson and Isaac Lee Webster.

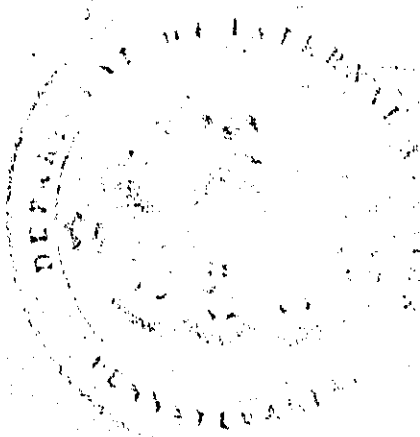
Containing 391 acres and 33 perches and allowance of six per cent.

Jonathan Mendenhall D.S.

Beaver April 12th 1811

To Andrew Porter Esq
Surveyor General.

IN TESTIMONY that the above is a copy of the original remaining on file in the Department of Internal Affairs of Pennsylvania, made conformably to an Act of Assembly approved the 16th day of February, 1833, I have hereunto set my Hand and caused the Seal of said Department to be affixed at Harrisburg, this fourteenth day of December 1905



Isaac R. Brown
Secretary of Internal Affairs.